

2.4 F50.85x8.5 L200CM1 Antenna

FEATURES



- 3.43 dBi Peak Gain
- Welding RG 1.13 cable, Ipex connector, 3M sticker for easy installation.
- For smart device wireless, Zigbee, Bluetooth terminal wireless receiving antenna transmitter antenna
- Mounting to: non-conductive surface
- Installation type: adhesive



PRODUCTS

Part No.	Weight	Dimensions (L x WxH)	Cables Dimensions	Connector	Color
M01-0600460R0A		FPC:50.85*8.5*0.2mm	Φ 1.13*200mm	IPX1	Black

SPECIFICATIONS

PARAMETER	SPECIFICATION
Frequency Bands, MHz	2400-2500
VSWR (Max)	3.0:1
Peak Gain, dBi (Typ)	Up to 3.43
Nominal Impedance	50 Ω
Max Power (ambient temp of 25°C)	10 Watts
Azimuth Beam Width (deg)	Omnidirectional
Polarization	Linear, Omnidirectional
Color	Black
Storage Temperature Range (°C)	-40° C to +85° C
Operational Temperature Range (°C)	-40° C to +85° C
Material Substance Compliance	REACH/RoHS Compliant

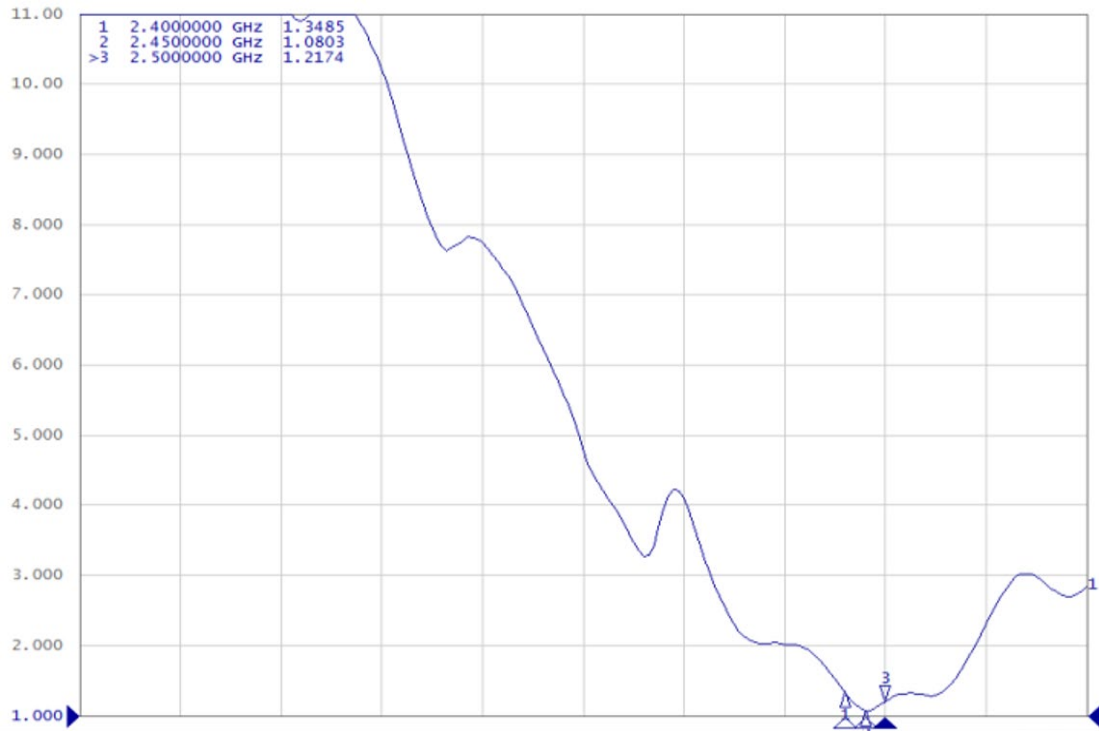
MyAntenna RF Technology Co., Ltd

ADD: No.RM 410, Country Garden Phoenix Wisdom Valley, No. 50 Tiezai Road, Baoan District, Shenzhen, P.R.China.

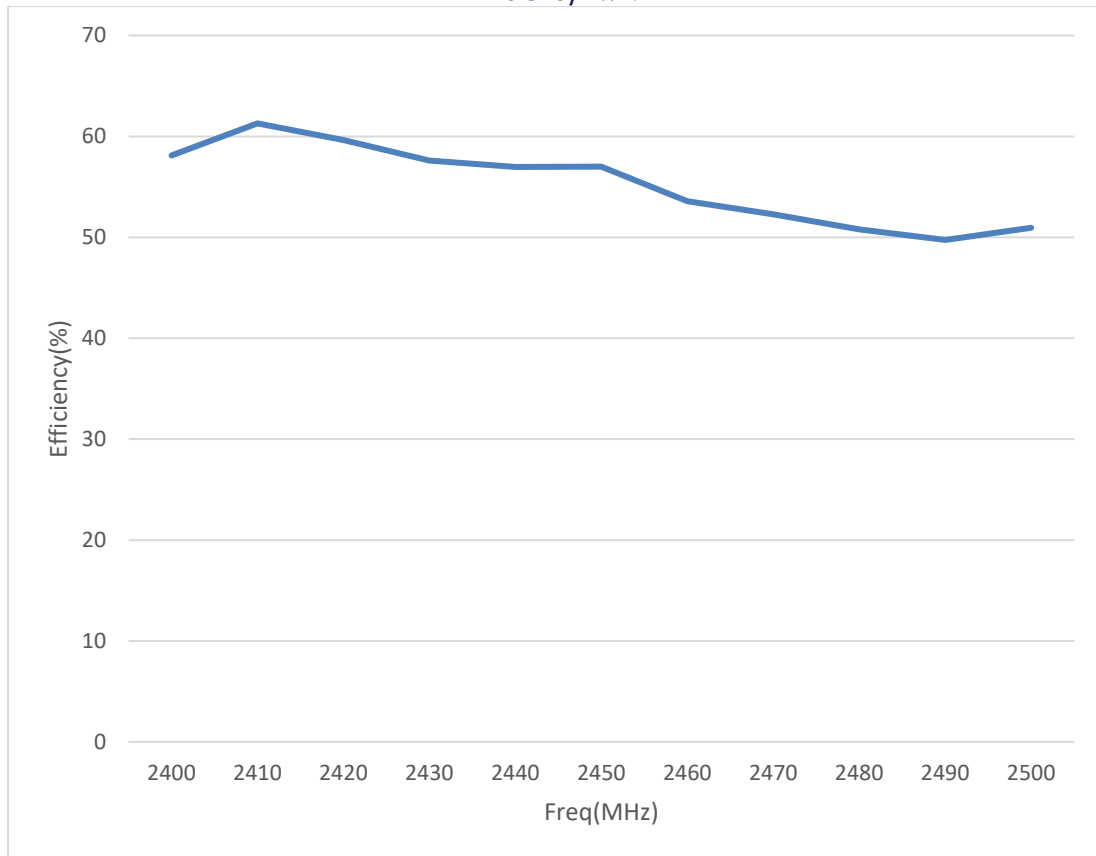
TEL: +86-0755-86503881 FAX: +86-0755-27801677 E-mail: nfc@myantenna.com

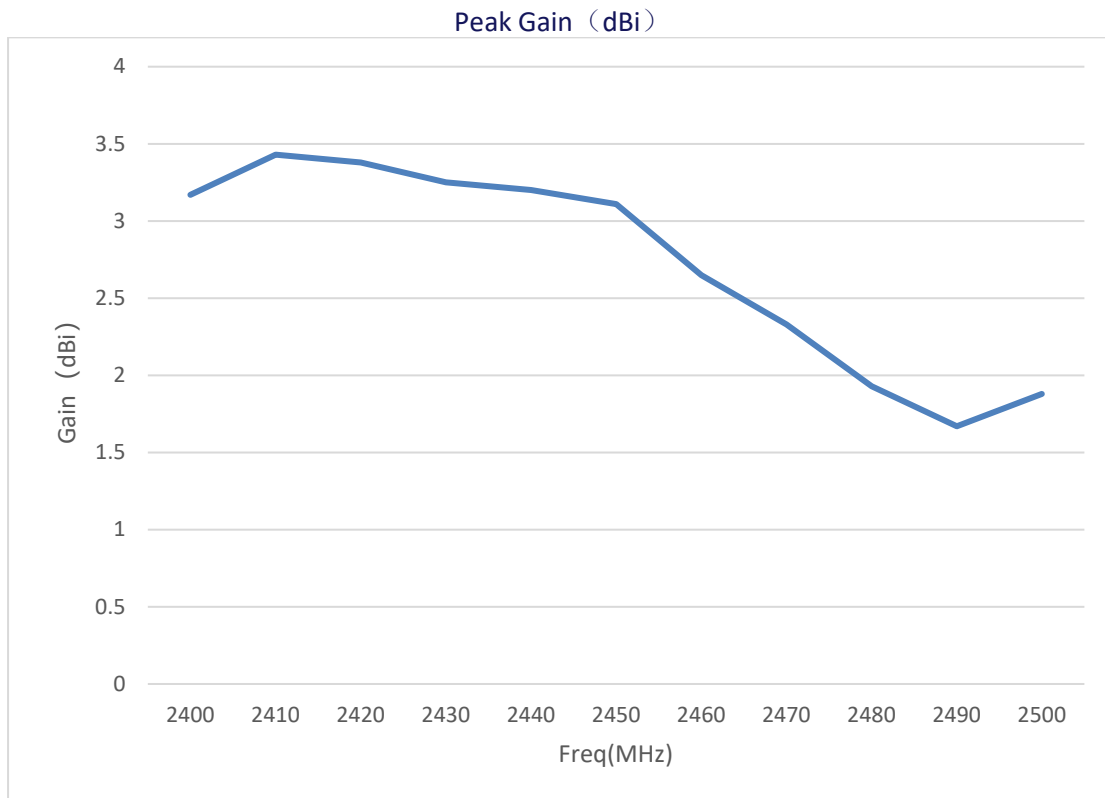
ELECTRICAL DATA

V.S.W.R



Efficiency (%)

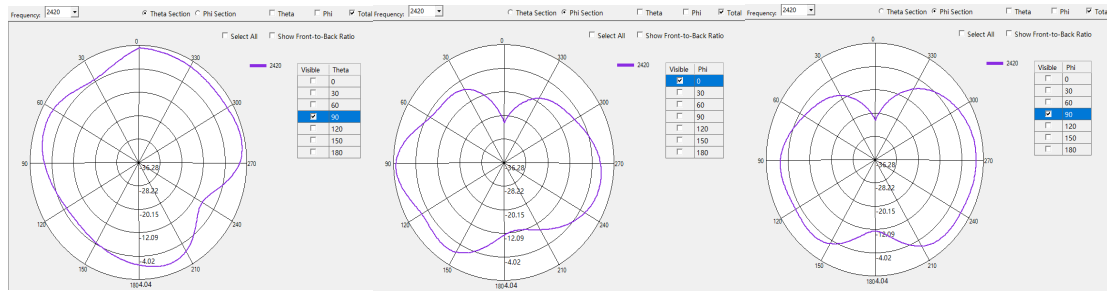




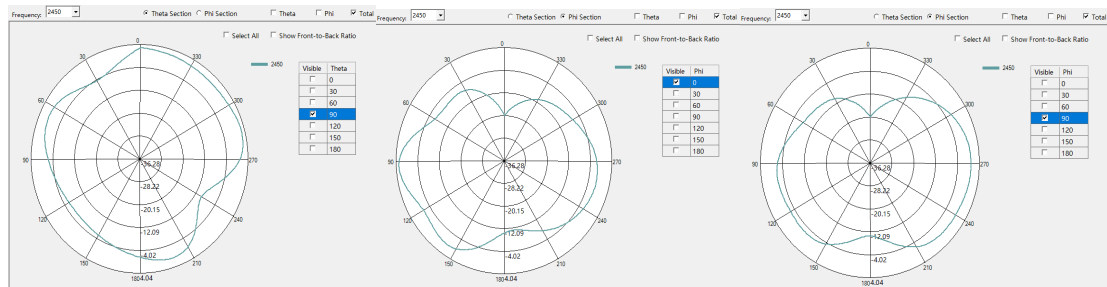
Freq(MHz)	Efficiency(%)	Gain (dBi)
2400	58.1	3.17
2410	61.29	3.43
2420	59.63	3.38
2430	57.6	3.25
2440	56.98	3.2
2450	57.01	3.11
2460	53.58	2.65
2470	52.29	2.33
2480	50.79	1.93
2490	49.74	1.67
2500	50.96	1.88

RADIATION PATTERNS

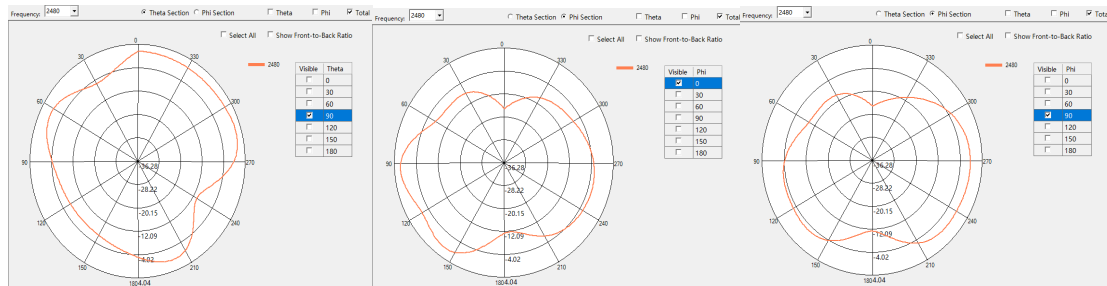
2D Radiation Pattern at 2420MHz



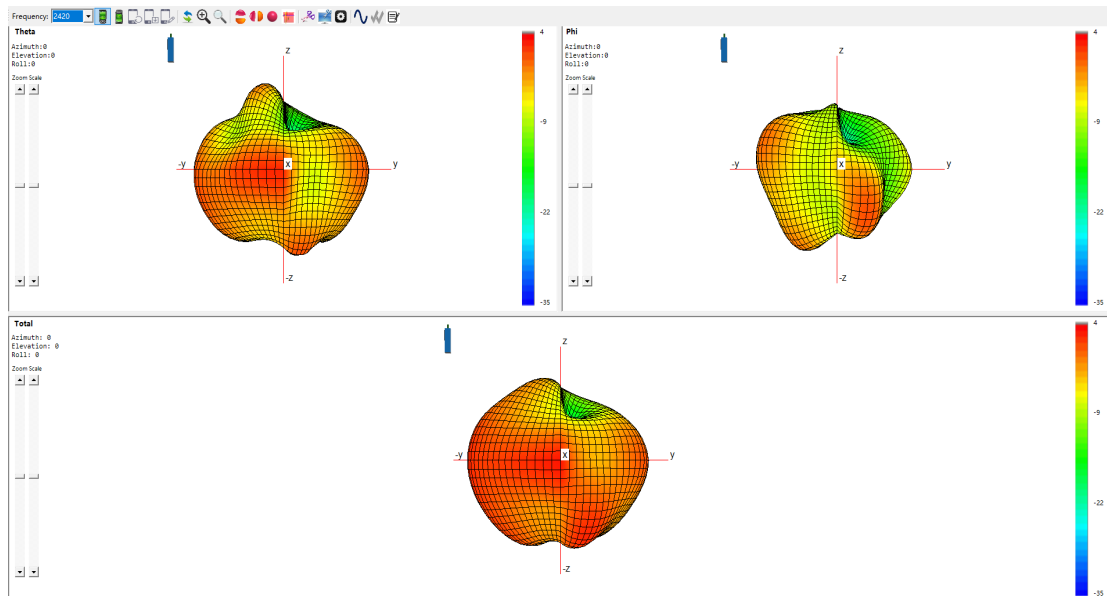
2D Radiation Pattern at 2450MHz



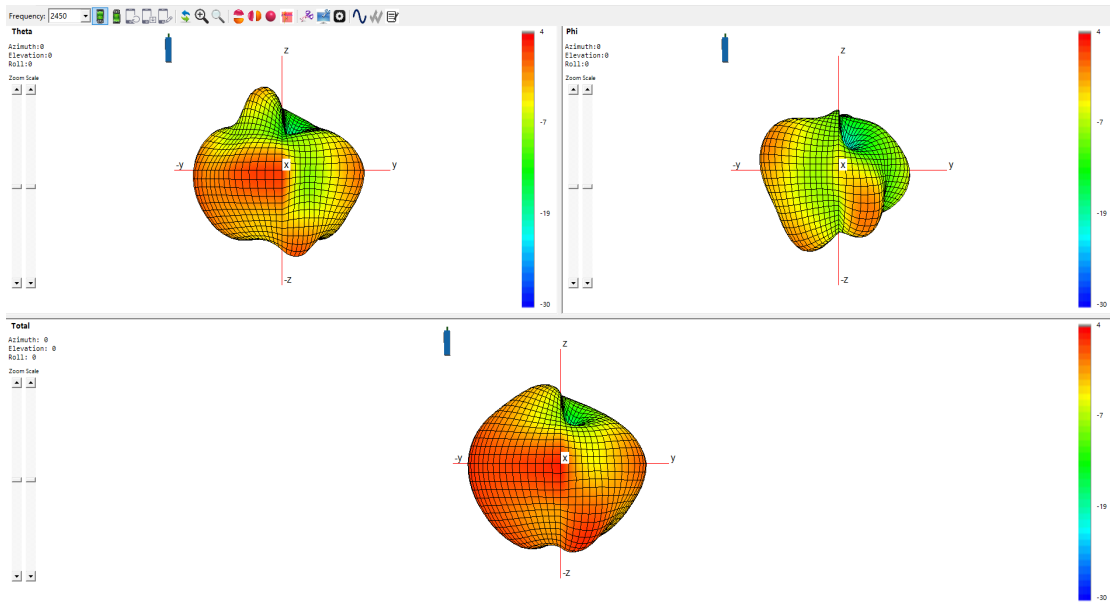
2D Radiation Pattern at 2480MHz



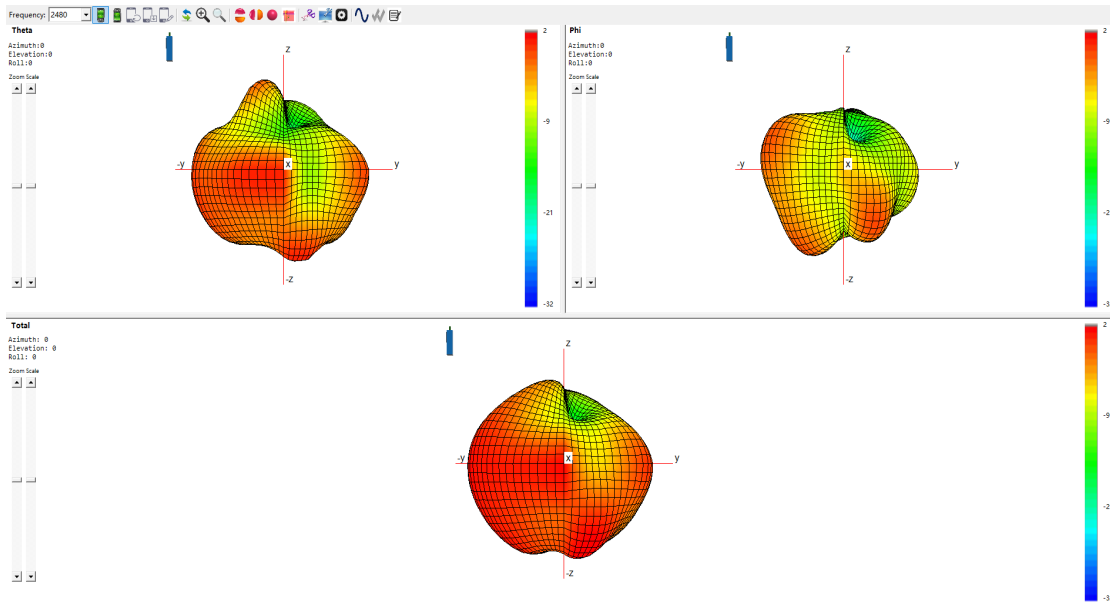
3D Radiation Pattern at 2420MHz



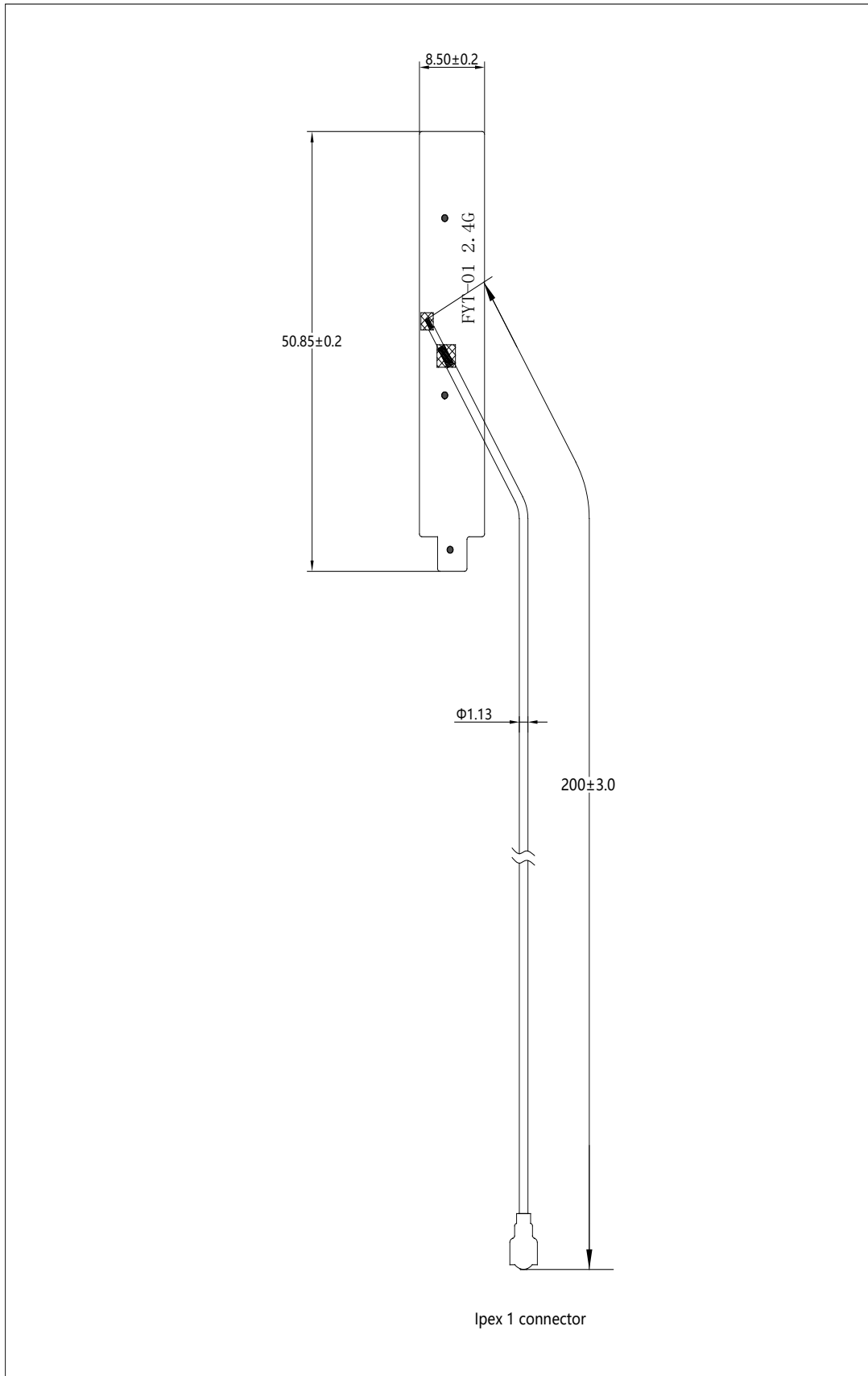
3D Radiation Pattern at 2450MHz



3D Radiation Pattern at 2480MHz



HOUSING CONFIGURATIONS





Aboosty™ is owned by Shenzhen MyAntenna RF Technology Co., Ltd. (often abbreviated as MyAntenna).